

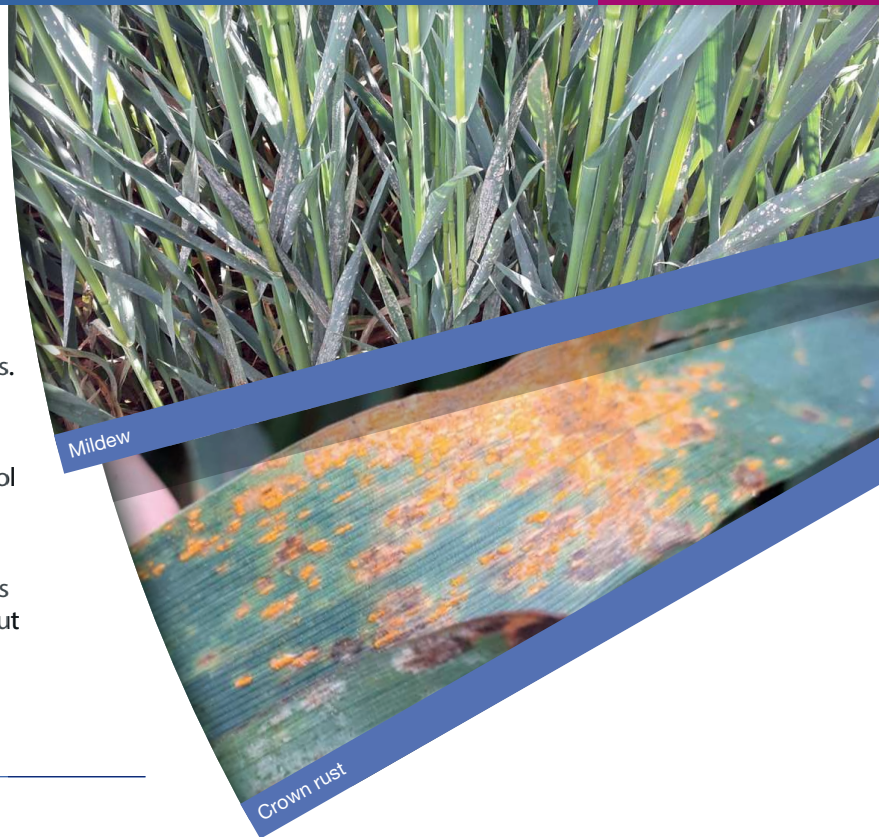


## ELATUS™ ERA SUPERIOR DISEASE CONTROL AND HIGHER YIELDS IN WINTER AND SPRING OATS

The most popular varieties of winter and spring oats grown in Ireland are highly responsive to fungicides.

Mildew is a constant threat and must be controlled in a programmed way. Crown rust is by far the biggest yield robber and has traditionally been difficult to control adequately.

Crown rust control has evolved significantly with the introduction of **ELATUS™ Era**. In addition, **ELATUS™ Era** is kind to the crop and prolongs the useful life of leaves, but without delaying harvest. **ELATUS™ Era** also reduces brackling.

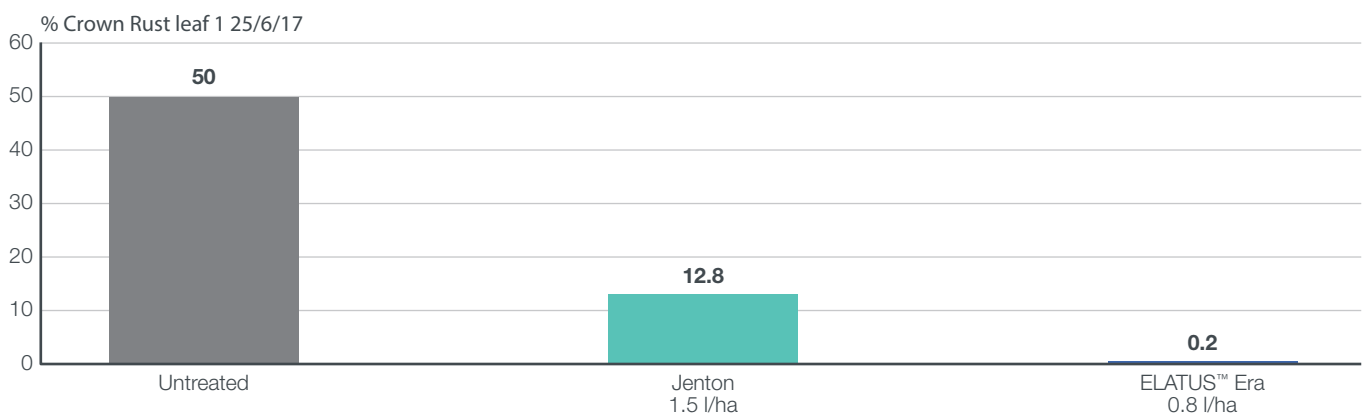


### Crown Rust

Crown rust only affects oats: it does not attack other cereals. The first symptoms are similar to brown rust of wheat and barley. Orange brown pustules appear scattered over the leaf surface. The leaf sheath and panicle can also become infected. The disease is favoured by high temperatures so epidemics usually occur later in the season. Late in the season black pustules appear in the existing crown rust lesions.

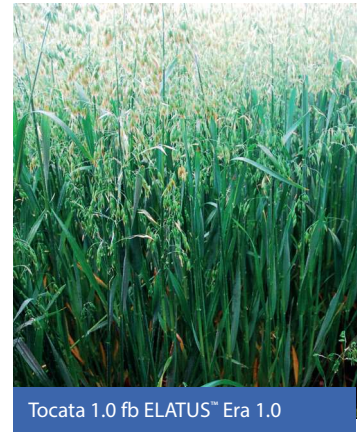
**ELATUS™ Era** delivers exceptional control of crown rust. In high pressure situations it will significantly outperform the previous standard.

### Winter Oats T2 – Crown Rust control 2017

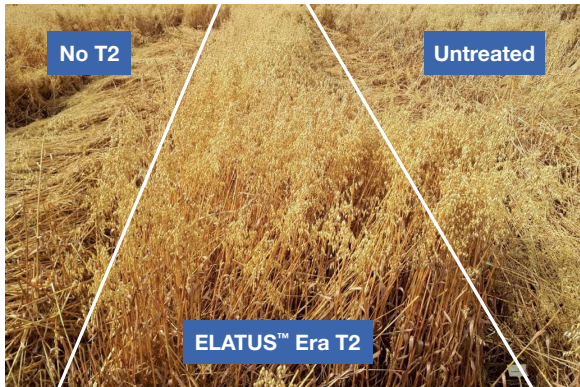


## Enhanced Green Leaf Protection

**ELATUS™ Era** has been shown to prolong the useful life of green leaf area without delaying harvest date. This contributes to its exceptional yield performance.



Teagasc trial, Husky, 2016



## Brackling

Brackling problems are not specific to barley. Delayed harvest in oats will also lead to brackling and associated harvesting difficulties.

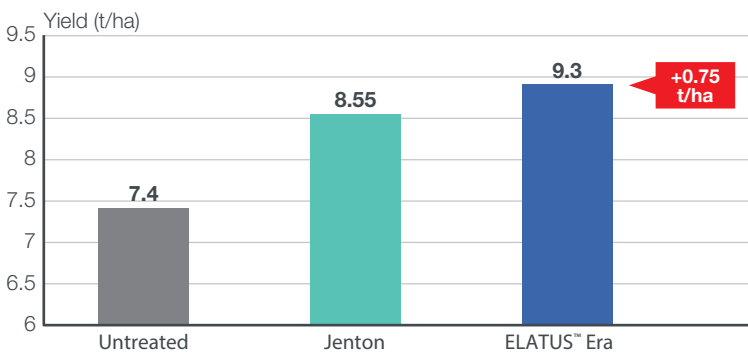
Good disease control programmes and, in particular the final fungicide will delay and reduce brackling.

**ELATUS™ Era** has shown strong brackling reducing properties in trials.

## ELATUS™ Era – DRIVING YIELD FORWARD

**ELATUS™ Era**'s exceptional disease control is matched or exceeded by its ability to deliver higher yields. Across all six winter and spring oat trials in 2016 and 2017 **ELATUS™ Era** delivered on average 0.75 tonnes per hectare more than the previous current standard T2 fungicide.

### Average of 6 oat trials – 2016 and 2017



Variety: Husky, Barra Location: Cork, Kilkenny, Carlow. Source: Crop Plot Trials, Crop Research Ltd., Teagasc T2 comparison. T1 standard across both treatments

This exceptional yield performance is seen in low and high disease situations and makes **ELATUS™ Era** an essential tool for oat growing in Ireland.

## ELATUS™ Era recommendation

### Winter and Spring Oats

Up to and including complete ear emergence (GS59)

ELATUS™ Era 0.8 l/ha

\*ELATUS™ Era is cleared for only one application per crop

## Applying ELATUS™ Era getting the best results

Optimum application advice:

- AMISTAR/Guardian Air™ Nozzle – drift reducing
- Water volumes – 100 to 150 l/ha
- Forward speed – 8 to 12 kph

Boom stability is key to accurate application. Forward speed should be adjusted depending on ground conditions.

