

Adigor[®]

syngenta[®]

Adjuvant registration number: **ADJ 0522 PCS 92268**

Emulsifiable concentrate containing 47% w/w methylated rapeseed oil.

An adjuvant for use with all authorised plant protection products in cereals, all non-edible crops, all non-crop production, all non-edible crops (stubble) and with Evolya (MAPP 20583) in grain and forage maize (UK only).

The (COSHH) Control of Substances Hazardous to Health Regulations may apply to the use of this product at work. (UK only)

Authorisation Holder and UK Marketing Company

Syngenta UK Limited,
Jealott's Hill International Research Centre, Bracknell,
Berkshire, RG42 6EY
Tel +44 (0) 1223 883400

Irish Marketing Company

Syngenta Ireland Limited
Block 6, Cleaboy Business Park, Old Kilmeaden Road, Waterford
Tel: 051-377203

In case of toxic or transport emergency ring

+44 (0) 1484 538444 any time.

PROTECT FROM FROST



The
Voluntary
Initiative

This product label is compliant with the
CPA Voluntary Initiative (VI) guidance. (UK only)

SAFETY PRECAUTIONS

(a) Operator protection

Engineering control of operator exposure must be used where reasonably practicable in addition to the following personal protective equipment:
WEAR SUITABLE PROTECTIVE CLOTHING (COVERALLS), SUITABLE PROTECTIVE GLOVES AND FACE PROTECTION (FACESHIELD) when handling the concentrate.

WEAR SUITABLE PROTECTIVE CLOTHING (COVERALLS), SUITABLE PROTECTIVE GLOVES AND FACE PROTECTION (FACE SHIELD) when handling contaminated surfaces. However, engineering controls may replace personal protective equipment if a COSHH assessment shows they provide an equal or higher standard of protection.

WASH ALL PROTECTIVE CLOTHING thoroughly after use, especially the inside of gloves.

WASH SPLASHES from skin immediately.

WASH HANDS AND EXPOSED SKIN before meals and after work.

Operators must:

Follow all operator protection instructions for the pesticide.

Where the personal protective equipment specified on the adjuvant label is different to that specified on the pesticide label, the highest level of protective equipment must be worn.

(b) Environmental protection

Do not contaminate water with the product or its container. Do not clean application equipment near surface water. Avoid contamination via drains from farmyards and roads.

(c) Storage and disposal

RINSE CONTAINER THOROUGHLY by using an integrated pressure rinsing device or manually rinsing three times. Add washings to sprayer at time of filling and dispose of safely. KEEP IN ORIGINAL CONTAINER, tightly closed, in a safe place.



L1135888 GBRI/04D PPE 4230474

10 litres

Product names marked © or ™, the ALLIANCE FRAME, the SYNGENTA Logo and the PURPOSE ICON are Trademarks of a Syngenta Group Company

ADIGOR® - An emulsifiable concentrate containing 47% w/w methylated rapeseed oil.

Danger

May be fatal if swallowed and enters airways.

May cause an allergic skin reaction.

Toxic to aquatic life with long lasting effects.

Avoid breathing mist or vapours.

Wear protective gloves.

IF SWALLOWED: Immediately call a

POISON CENTRE/doctor.

Do NOT induce vomiting.

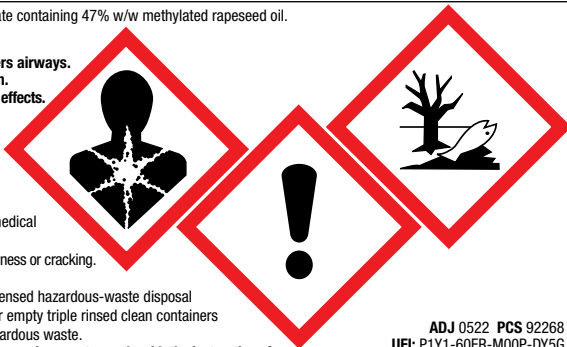
IF skin irritation or rash occurs: Get medical advice/attention.

Repeated exposure may cause skin dryness or cracking.

Collect spillage.

Dispose of contents/container to a licensed hazardous-waste disposal contractor or collection site except for empty triple rinsed clean containers which can be disposed of as non-hazardous waste.

To avoid risks to human health and the environment comply with the instructions for use.



ADJ 0522 PCS 92268
UFI: P1Y1-60ER-M00P-DY5G

IMPORTANT INFORMATION - FOR USE ONLY AS A WETTING AGENT

Crop	Pesticide(s)	Maximum concentration (% spray solution)	Maximum number of treatments	Latest time of application
Cereals	All authorised plant protection products	1.0	Follow the statutory conditions of use for the plant protection product	Up to and including GS52 (1/4 inflorescence)
All edible crops	All authorised plant protection products at half or less than half the authorised plant protection product rate	1.0	Follow the statutory conditions of use for the plant protection product	Follow the statutory conditions of use for the plant protection product
All edible crops (stubble)	All authorised plant protection products	1.0	Follow the statutory conditions of use for the plant protection product	Follow the statutory conditions of use for the plant protection product
Grain maize	Evolya (MAPP 20583) - UK only	1.5	1 per crop	Up to and including GS19 (nine leaves)
Forage maize	Evolya (MAPP 20583) - UK only	1.5	1 per crop	Up to and including GS19 (nine leaves)
	All other authorised plant protection products	1.0	Follow the statutory conditions of use for the plant protection product	Up to and including tip of tassel visible
Almond, apple, apricot, aubergine, blackberry, blackcurrant, borage, Broad bean (fresh), beans (without pods (dry and fresh)), broccoli, Brussels sprout, bulb onion, cabbage, calabrese, carrot, cauliflower, cherry, chilli, collard, combining pea, cucumber, dwarf french bean, edible podded pea, field bean, fodder beet, garlic, hops, kale, leek, lettuce, linseed, mangel, melon, nectarine, oilseed rape, oriental cabbages, parsnip, peach, pear, pepper, plum, potato, pumpkin, raspberry, red beet, reccurrant, rocket, runner beans, salad onion, shallot, soya bean (dry), soya bean, spinach, strawberry, sugar beet, swede, sweetcorn, table grapes, tomato, turnip, vining pea, wine grapes, winter squash	All authorised plant protection products	1.0	Follow the statutory conditions of use for the plant protection product	Up to the growth stage specified under directions for use.
All non edible crops including stubble	All authorised plant protection products	1.0	Follow the statutory conditions of use for the plant protection product	Follow the statutory conditions of use for the plant protection product
Non crop production	All authorised plant protection products	1.0	Follow the statutory conditions of use for the plant protection product	Follow the statutory conditions of use for the plant protection product

READ THE LABEL BEFORE USE. USING THIS PRODUCT IN A MANNER THAT IS INCONSISTENT WITH THE LABEL MAY BE AN OFFENCE. FOLLOW THE CODE OF PRACTICE FOR USING PLANT PROTECTION PRODUCTS.

DIRECTIONS FOR USE

IMPORTANT: This information is approved as part of the Product Label. All instructions within this section must be carefully read in order to obtain safe and successful use of this product.

GENERAL INFORMATION

ADIGOR® is a methylated rapeseed oil based adjuvant for use with all authorised plant protection products.

Crops

Cereals

ADIGOR can be used on cereals up to and including GS52 (1/4 inflorescence). Follow the statutory conditions of use of the plant protection product.

Grain and Forage Maize

UK only: ADIGOR can be used once on grain and forage maize up to and including GS19 (nine leaves) with Evolya (MAPP 20583). Follow the statutory conditions of use of Evolya (MAPP 20583).

UK and Ireland: ADIGOR can be used on forage maize up to and including tip of tassel visible with any other authorised plant protection product. Follow the statutory conditions of use of the plant protection product.

Edible crops

ADIGOR may be used with any authorised plant protection product at half or less than half the authorised plant protection product rate. Observe the statutory conditions of use for the plant protection product for the number of treatments and latest time of application.

In addition, this adjuvant may be used on the following crops, up to the growth stages specified, with all authorised plant protection products applied up to their full authorised rate and for the production of stubble.

Crop	Latest growth stage of application
Almond	Up to and including first fruit set
Apple, Pear	Up to and including fruit 5-10 mm
Apricot, Cherry, Nectarine, Peach, Plum	Up to and including first fruit set
Aubergine, chilli, cucumber, melon, pepper, pumpkin, winter squash	Up to and including first fruit set
Beans without pods (dry)	Up to and including first pod set
Beans without pods (fresh)	Up to and including first pod set
Blackberry	Up to and including first fruit development
Blackcurrant and redcurrant	Up to and including first visible green fruitlet
Borage	Beginning of ripening: seed green
Broad bean (fresh), dwarf French bean, edible podded pea, runner beans	Up to and including first pod set
Broccoli, calabrese	Up to and including heads beginning to form; width of growing tip >1 cm ²
Brussels sprout	Up to and including lateral buds begin to develop
Cabbage	Up to and including heads begin to form
Carrot, parsnip, swede, turnip	Up to and including 9 true leaves unfolded
Cauliflower	Up to and including cauliflower heads beginning to form; width of growing tip up to 1 cm ²
Collard, Kale	Main shoot has reached 30% of the expected height typical for the variety
Combining pea	Up to and including flat pod (non-edible pods only)
Field bean	Up to and including first pod set
Fodder beet, Mangel	Up to and including 6 fully expanded leaves
Garlic, bulb onion, shallot, salad onion	Up to and including 9 leaves clearly visible

Crop	Latest growth stage of application
Grapes (table and wine)	Up to and including first fruit set
Hops	Up to and including cone set
Leek	Up to and including 9 leaves clearly visible
Lettuce	Varieties forming heads: up to and including heads beginning to form
Lettuce	Varieties not forming heads: up to and including leaf rosette has reached 30% of the diameter typical for the variety
Linseed	Up to and including 10% capsules formed
Oilseed rape	Up to and including 10% potential pods
Oriental cabbages	Varieties forming heads: up to and including heads beginning to form
Oriental cabbages	Varieties for forming heads: up to and including leaf rosette has reached 30% of the diameter typical for the variety
Potato	Up to and including tuber initiation
Raspberry	Up to and including first fruit set
Red beet	Up to and including six fully expanded leaves. Does not include beetroot grown for salad leaf use
Rocket	Up to and including 3rd true leaf unfolded
Soya bean	End of flowering: first pods visible (approx. 5 mm length) - GS69
Soya bean - (dry)	End of flowering: first pods visible (approx. 5 mm length) - GS69
Spinach	Leaf rosette has reached 30% of the expected diameter typical for the variety
Strawberry	Up to and including first fruit development
Sugar beet	Up to and including 6 fully expanded leaves
Sweetcorn	Up to and including tip of tassel visible
Tomato	Up to and including first fruit set on first truss
Vining pea	Up to and including flat pod (non-edible pods only)

Non-Edible Crops (including stubble), Non-Crop Production

ADIGOR may be used with any authorised plant protection product following the statutory conditions of use of the plant protection product.

Dose

Cereals, all non-edible crops (including stubble), all edible crops (including stubble and forage maize), non-crop production.

Apply ADIGOR up to a maximum concentration of 1% concentration of the total spray volume. Follow the statutory condition of use of the plant protection product.

Grain and Forage Maize - Application with Evolya (MAPP 20583), UK only

Apply ADIGOR up to a maximum concentration of 1.5% concentration of the total spray volume. Follow the statutory conditions of use of Evolya (MAPP 20583).

Mixing Procedure

Make sure the sprayer is set to give an even application at the correct volume. Fill the spray tank with half the required volume of water and begin agitation. Add and disperse the herbicide product first, then add the required amount of ADIGOR. Add the rest of the water and continue to agitate the mixture thoroughly. Always agitate during spraying.

To access the Safety Data Sheet for this product, scan QR code:

UK



Ireland



Alternatively, contact your supplier.

ADIGOR® - An emulsifiable concentrate containing 47% w/w methylated rapeseed oil.

Danger

May be fatal if swallowed and enters airways.

May cause an allergic skin reaction.

Toxic to aquatic life with long lasting effects.

Avoid breathing mist or vapours.

Wear protective gloves.

IF SWALLOWED: Immediately call a

POISON CENTRE/doctor.

Do NOT induce vomiting.

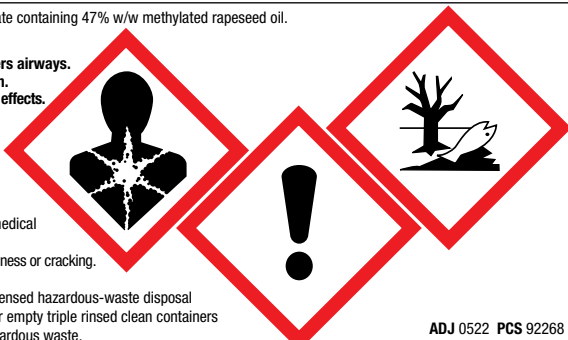
IF skin irritation or rash occurs: Get medical advice/attention.

Repeated exposure may cause skin dryness or cracking.

Collect spillage.

Dispose of contents/container to a licensed hazardous-waste disposal contractor or collection site except for empty triple rinsed clean containers which can be disposed of as non-hazardous waste.

To avoid risks to human health and the environment comply with the instructions for use.



ADJ 0522 PCS 92268
UFI: P1Y1-60ER-M00P-DY5G

IMPORTANT INFORMATION - FOR USE ONLY AS A WETTING AGENT

Crop	Pesticide(s)	Maximum concentration (% spray solution)	Maximum number of treatments	Latest time of application
Cereals	All authorised plant protection products	1.0	Follow the statutory conditions of use for the plant protection product	Up to and including GS52 (1/4 inflorescence)
All edible crops	All authorised plant protection products at half or less than half the authorised plant protection product rate	1.0	Follow the statutory conditions of use for the plant protection product	Follow the statutory conditions of use for the plant protection product
All edible crops (stubble)	All authorised plant protection products	1.0	Follow the statutory conditions of use for the plant protection product	Follow the statutory conditions of use for the plant protection product
Grain maize	Evolya (MAPP 20583) - UK only	1.5	1 per crop	Up to and including GS19 (nine leaves)
Forage maize	Evolya (MAPP 20583) - UK only	1.5	1 per crop	Up to and including GS19 (nine leaves)
	All other authorised plant protection products	1.0	Follow the statutory conditions of use for the plant protection product	Up to and including tip of tassel visible
Almond, apple, apricot, aubergine, blackberry, blackcurrant, borage, Broad bean (fresh), beans without pods (dry and fresh), broccoli, Brussels sprout, bulb onion, cabbage, calabrese, carrot, cauliflower, cherry, chilli, collard, combining pea, cucumber, dwarf french bean, edible podded pea, field bean, fodder beet, garlic, hops, kale, leek, lettuce, linseed, mangel, melon, nectarine, oilseed rape, oriental cabbages, parsnip, peach, pear, pepper, plum, potato, pumpkin, raspberry, red beet, redcurrant, rocket, runner beans, salad onion, shallot, soya bean (dry), soya bean, spinach, strawberry, sugar beet, swede, sweetcorn, table grapes, tomato, turnip, vining pea, wine grapes, winter squash	All authorised plant protection products	1.0	Follow the statutory conditions of use for the plant protection product	Up to the growth stage specified under directions for use.
All non edible crops including stubble	All authorised plant protection products	1.0	Follow the statutory conditions of use for the plant protection product	Follow the statutory conditions of use for the plant protection product
Non crop production	All authorised plant protection products	1.0	Follow the statutory conditions of use for the plant protection product	Follow the statutory conditions of use for the plant protection product

READ THE LABEL BEFORE USE. USING THIS PRODUCT IN A MANNER THAT IS INCONSISTENT WITH THE LABEL MAY BE AN OFFENCE. FOLLOW THE CODE OF PRACTICE FOR USING PLANT PROTECTION PRODUCTS.