

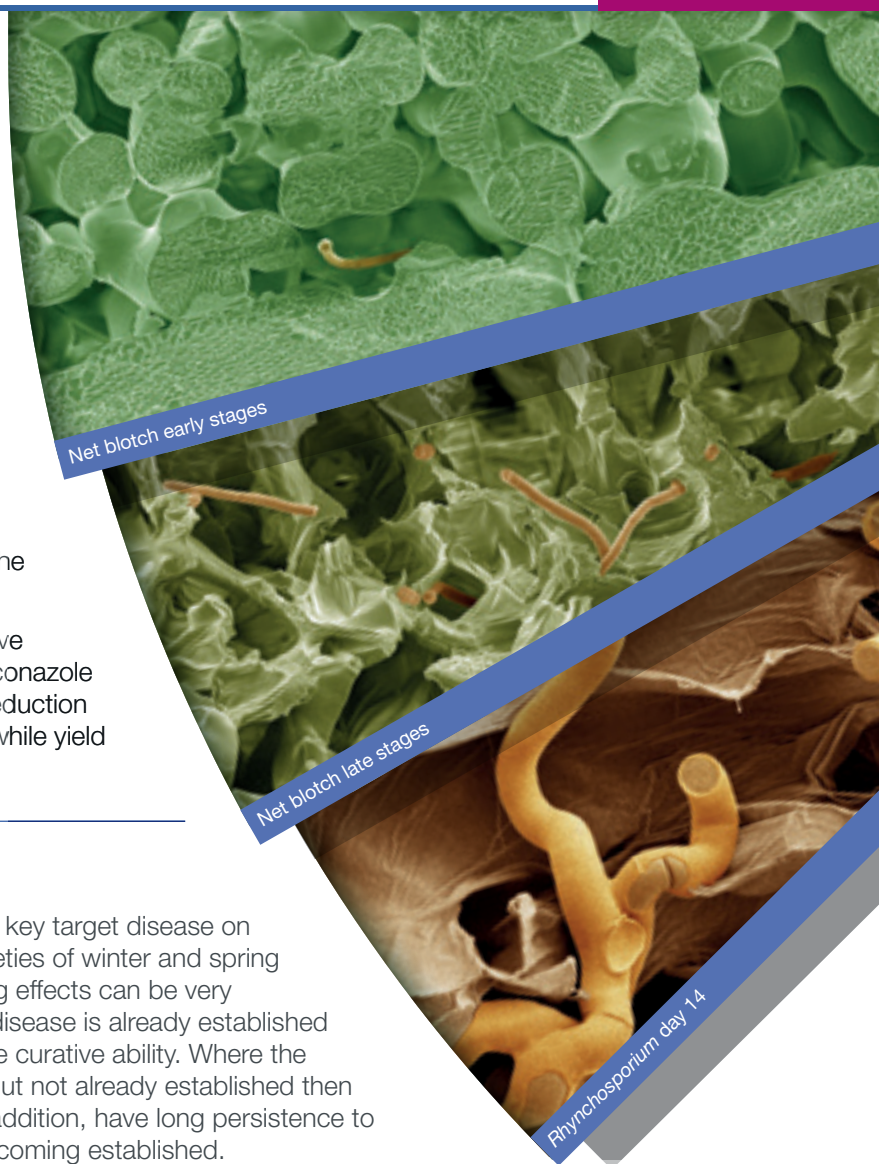


ELATUS™ ERA FULL RANGE OF DISEASES CONTROLLED PLUS BRACKLING REDUCTION ON WINTER AND SPRING BARLEY

SDHI and triazole fungicides are the backbone of disease control programmes in winter and spring barley.

Products within programmes must control the key diseases *Rhynchosporium*, Net Blotch, *Ramularia* as well as Mildew, Brown Rust and Eyespot. In addition the final fungicides must also reduce or control brackling.

ELATUS™ Era – a combination of the novel SDHI active SOLATENOL™ and the leading barley triazole, prothioconazole delivers a full range of disease control and brackling reduction on barley. Trials and field experience also show worthwhile yield benefits over other commonly used products.



Rhynchosporium

Rhynchosporium is the key target disease on most conventional varieties of winter and spring barley. Its yield reducing effects can be very significant. Where the disease is already established fungicides need to have curative ability. Where the disease is threatened but not already established then the fungicide must, in addition, have long persistence to prevent the disease becoming established.

ELATUS™ Era delivers a combination of curative activity with long persistence against *Rhynchosporium*.



Net Blotch

Net Blotch is an increasingly difficult disease to control in barley, with confirmed insensitivity to strobilurin chemistry and indications of sensitivity shifts to SDHI fungicides.

It is important to treat the disease at the early stages of infection and SDHI/triazole mixes continue to be the first line of defence against net blotch.

Using **ELATUS™ Era** in barley disease control programmes provides the highest available level of protection against net blotch.

Ramularia

Ramularia has become a key target disease on barley. Its yield reducing effects are better understood now and fungicide programmes should optimise control of *Ramularia*. Unfortunately the disease is increasingly insensitive to many fungicide groups. Strobilurins are largely ineffective and there are indications of reduced sensitivity to both triazoles and SDHI's.

Trials have shown that **BRAVO** is key to *Ramularia* control and **ELATUS™ Era** will provide additional activity.

Brown Rust, Eyespot and Mildew

Brown rust, eyespot and mildew all have the potential to reduce yields. While not the front line disease targets, choosing a fungicide that will deal with these diseases gives peace of mind.

ELATUS™ Era is an excellent rust fungicide and delivers top level control of brown rust in barley. In addition it will provide useful protection against mildew (add a morpholine if mildew is established) and a T1 application will reduce eyespot infection.



Brackling

As barley yields are increasing, brackling seems to be more problematic, particularly when harvest is delayed. A combination of nutrition, growth regulation and fungicide is needed to minimise brackling.

In trials **ELATUS™ Era** has been shown to have very positive brackling reducing benefits.

Brackling Reduction

Winter Barley Fungicide Trial – Crop Research Ltd Kilmacow, Co Kilkenny. Photos 6 July 2017 cv Cassia



Untreated



ELATUS™ Era @ T2



Ceriax @ T2

ELATUS™ Era recommendation

| Winter and Spring barley | |
|--------------------------|--|
| T1 | ELATUS™ Era 0.7-1.0 l/ha +/- BRAVO 1.0 l/ha |
| OR* | |
| T2 | ELATUS™ Era 0.7-1.0 l/ha + BRAVO 1.0 l/ha |

*ELATUS™ Era is cleared for only one application per crop

Applying ELATUS™ Era getting the best results

Optimum application advice:

- AMISTAR/Guardian Air™ Nozzle – drift reducing
- Water volumes – 100 to 150 l/ha
- Forward speed – 8 to 12 kph

Boom stability is key to accurate application. Forward speed should be adjusted depending on ground conditions.

